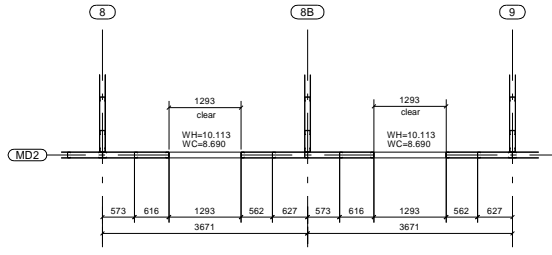
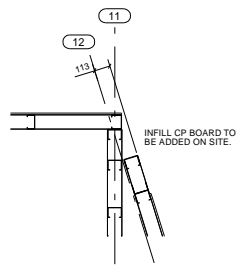


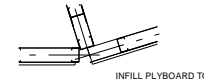
DETAIL A (NON-STANDARD BAY - STUD SETOUT)
(1:50)



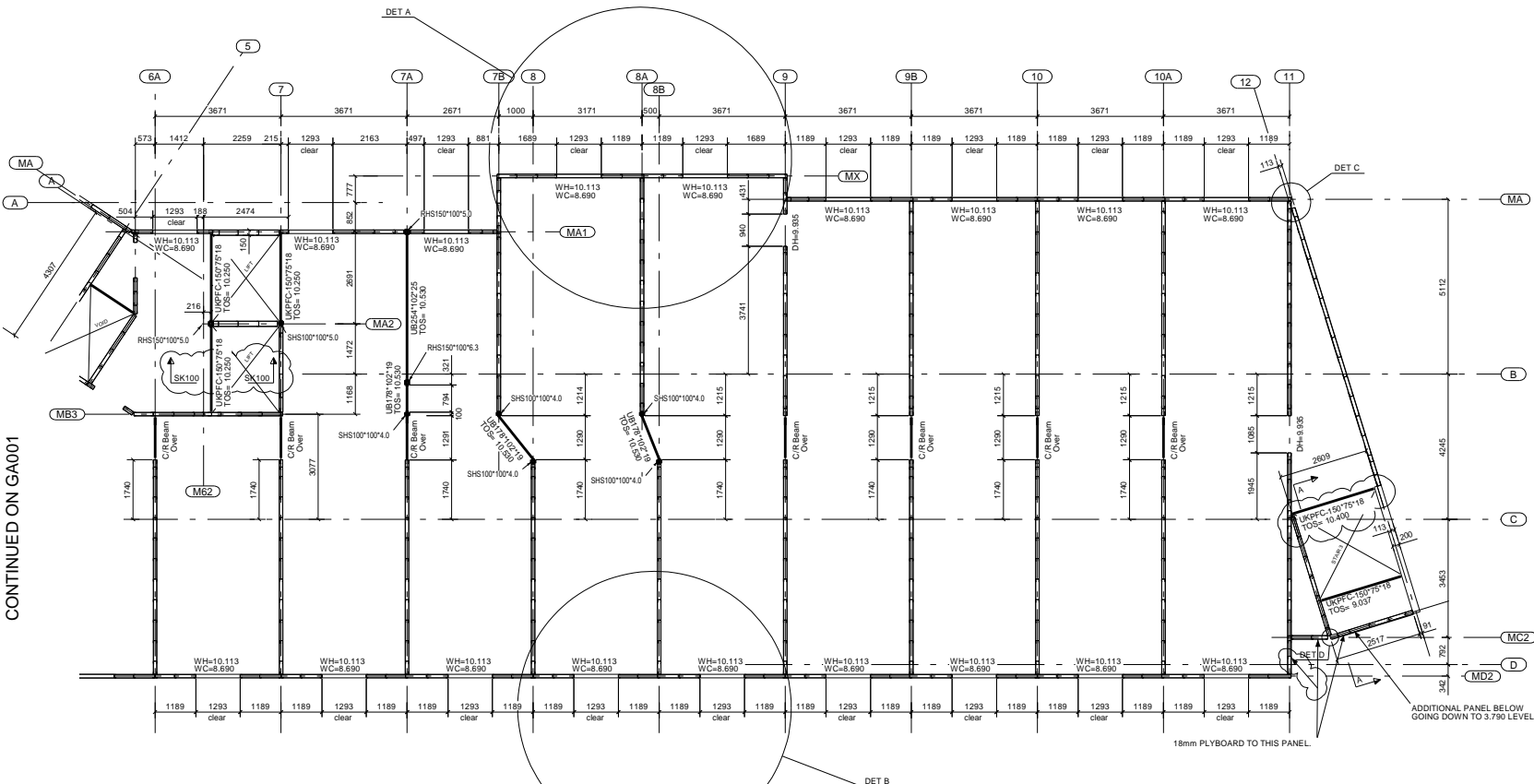
DETAIL B (TYPICAL BAY - STUD SETOUT)
(1:50)



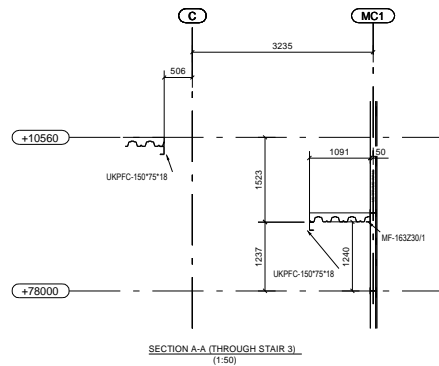
ENLARGED DETAIL C (CORNER DETAIL)
(1:20)



ENLARGED DETAIL D (CORNER DETAIL)
(1:20)



FIRST FLOOR PLAN (2 OF 2)
(1:75)



SECTION A-A (THROUGH STAIR 3)
(1:50)

- NOTES:
- (1) DH DENOTES STEEL LEVEL TO UNDERSIDE OF THE DOOR HEAD MEMBER.
 - (2) WH DENOTES STEEL LEVEL TO THE UNDERSIDES OF THE WINDOW HEAD MEMBER.
 - (3) WC DENOTES STEEL LEVEL TO THE TOP OF WINDOW CILL MEMBER.
 - (4) ALL LEVELS AND DIMENSIONS TO UNCLAD FACES OR GRID LINES.
 - (5) LEVELS ARE RELATIVE TO 0.000 SFL DATUM.
 - (6) WALLS ARE 100mm STUDS CENTRES ON GRID U.N.O.
 - (7) SINGLE SOLID LINE DENOTES HOT ROLLED STEEL MEMBERS.
 - (8) 'C/R Beam Over' DENOTES COMPOUND COLD ROLLED BEAM OVER CORRIDOR.

REV MARK	REVISION DESCRIPTION	REVISION DATE
D	UPDATED TO SUIT COMMENTS	30.06.10
C	UPDATED TO SUIT COMMENTS	24.06.10
B	BEAM REVISED GRID 7A PLYBOARD NOTE ADDED	18.06.10
A	UPDATED TO SUIT LATEST ARCHITECT'S DRAWINGS	09.06.10


 Metsec plc
 Framing Division
 Broadway Road, Oldbury
 West Midlands B69 4BE
 T: +44 (0) 121 6000
 F: +44 (0) 121 600 6023
 E: metsec@metsec.com


 www.metsec.com

DRAWING TITLE	FIRST FLOOR PLAN (2 OF 2)	CLIENT	ATKIN TRADE SPECIALISTS
CONTRACT	PREMIER INN, PLOT B	SITE	SOUTHAMPTON
MODELLED BY	R.B./D.H.	DATE	10.05.2010
CONTRACT NO	CW19262	SCALE	1:12.5 1:20 1:50
DRAWING No	GA002	REVISION MARK	D

CONTINUED ON GA001